

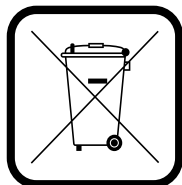
# WEEE Presentation Guide

KMK aim to ensure that customers are aware of the importance of safe handling, storage and presentation of WEEE for collection. WEEE must be managed with **extreme care** to protect human health and the environment, while ensuring that subsequent preparation for re-use, recycling and/or recovery is not adversely affected or inhibited. We would greatly appreciate if you would take time to read this leaflet on the appropriate presentation of your WEEE and in return, KMK provide you with a compliant and quality collection service.

## What is WEEE?

Waste Electrical and Electronic Equipment (WEEE) includes **anything that has a plug or uses a battery**. It primarily refers to temperature exchange equipment, screens, lamps, large equipment, small equipment and small IT/telecommunications equipment, which are all categories of WEEE.

*Any item with the following crossed out wheelie bin symbol requires separate collection and treatment*



## Safe Handling of WEEE

WEEE must be handled carefully in order to avoid the release of **hazardous substances** into air, water or soil, as a result of damage and/or leakage. These releases can also have significant negative impacts on human health. WEEE should not be deliberately damaged, crushed, dropped from a height

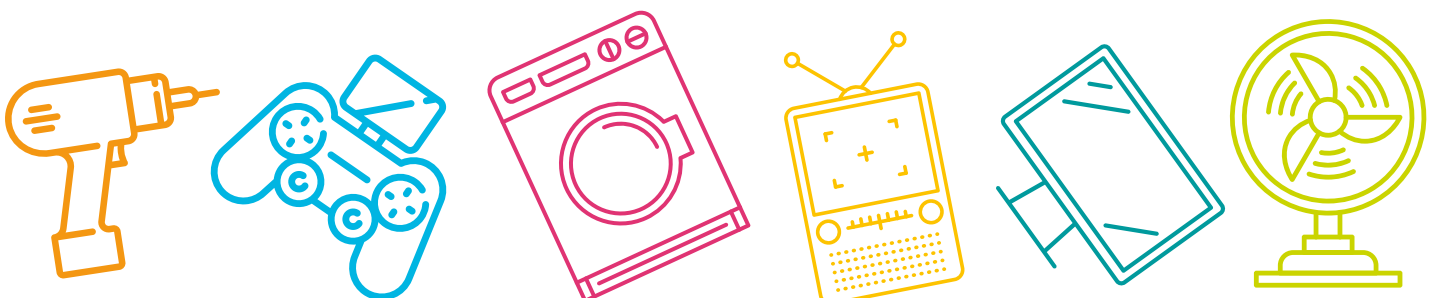
or compacted prior to treatment. Please seek assistance when lifting heavier appliances, practice proper **manual handling technique** and always consult your workplace Health & Safety Officer on required **personal protective equipment (PPE)** use and **procedures**.

## Safe Storage of WEEE

Appropriate storage of WEEE and attentive site management should be employed at all times to address all environmental and health and safety concerns. WEEE must be stored in areas that have **impermeable surfaces** with a nearby **spill kit** to prevent pollution. **Weatherproof covering** must also be provided for all stored WEEE and fractions to prevent dispersal of hazardous material into the environment. WEEE should be stored in well ventilated areas, away from sources of water or anything hot/flammable. Any items being placed on a pallet must be **secured to the pallet** by wrapping to prevent the item from falling and becoming damaged. Pallets and receptacles must be stacked securely on top of each other and not overfilled to reduce the likelihood of items falling from height or shifting during transport.

## Important Safety Notice on Batteries

Please note that many WEEE appliances contain waste batteries. Any type / chemistry of battery, if still holding a charge, can short circuit and result in a fire. Where possible, loose batteries should be removed from whole WEEE and separately presented for collection. Never attempt to forcefully remove a battery from a WEEE appliance. Please refer to the separately prepared **Waste Battery Presentation Guide** for further information on the safe handling, storage and presentation of waste batteries.



## Presenting WEEE for Collection



### Temperature Exchange Equipment:

Refrigerant media typically found in fridges, freezers, air conditioners, dehumidifiers, etc. can leak from appliances if damaged, harming the environment and causing skin or eye irritation as a result of direct contact with the rapidly evaporating refrigerant. When being presented for collection, appliances must be **free of any contamination** e.g. foodstuff and packaging. Take care to **protect the exposed rear wire condenser** on the back of fridges and freezers stack these appliances facing frontwards so that it is not possible to grip the appliance by the condenser on either side. Appliances should be **shrink-wrapped securely to a wooden pallet** as pictured. If stacking is required, ensure it is done so heaviest at the bottom, lightest at the top to prevent damage.



*Fridge Freezers shrink-wrapped to wooden pallet*



### Screens:

Cathode ray tube (CRT) / flat panel display unit televisions/ monitors and appliances with a screen surface greater than 100 cm<sup>2</sup> can be placed into **designated WEEE cages**. The screens must be handled with care to avoid implosion and/or damage to internal backlights resulting in the dispersal of hazardous fluorescent coatings or mercury vapours. Ensure where possible that the screens are **stacked heaviest at the bottom, lightest at the top** to prevent any unnecessary damage. Please **do not mix CRT units and FPD units** in the same cage and **do not overfill** the WEEE cages.



*Televisions and monitors in WEEE cages*



### Lamps:

Tube lights and lightbulbs must be handled and stored with care to avoid damage/breakage resulting in the release of mercury vapour which can be harmful to humans and the environment. Tube lights and lightbulbs should be **handled extremely carefully** and placed in secure, robust lighting “coffins” or boxes provided with closing lids. In the event of breakage, ensure that the PPE is worn appropriate to the risk and place breakages into the same coffin / box. If stacking lighting boxes, please ensure these boxes are **secured to a wooden pallet** by wrapping to prevent the item from falling and becoming damaged.



*Tubes and bulbs contained in lighting coffins*



*Tubes and bulbs contained in WEEE Ireland lighting boxes*



### Large Equipment:

Large equipment is any appliance with an external dimension **greater than 50cm**. Typical examples include washing machines, clothes dryers, dish washing machines, cookers, large luminaires, large IT and telecommunications equipment, large medical devices, sports equipment, musical equipment, microwaves, etc. Large equipment may contain substances that can leak out into the environment and cause harm. Large equipment should be **shrink-wrapped securely to a wooden pallet**. Where stacking is required, ensure it is done so heaviest at the bottom, lightest at the top to prevent any unnecessary damage.

Microwaves can be placed in large WEEE cages and **stacked heaviest at the bottom, lightest at the top** to prevent any unnecessary damage / breakage. Appliances must be **free of any contamination** e.g. foodstuff and packaging. Please **do not overfill** the WEEE cages.



*Large equipment shrink-wrapped to wooden pallets*



### Small Equipment and Small IT/Telecommunications Equipment:

If the largest outer dimension is **50 cm or less**, an appliance meets the definition of either small equipment or small IT and telecommunications equipment. Typical examples include vacuum cleaners, small kitchen appliances, electronic tools, personal care appliances, phones, household printers, modems, etc.

Small equipment can be placed in the **large WEEE cages / trolleys** provided. Please ensure that all printer cartridges/toner **cartridges and loose batteries are removed** from these appliances as they require separate collection and treatment.

Please note that as many small appliances contain loose or embedded batteries. It is very important that they are carefully handled and **never dropped, dragged or thrown**. To do so could damage a battery and result in a fire.

Please **do not overfill** the WEEE cages or trolleys.



*Small appliances in WEEE cages*



*WEEE Trolleys*

KMK Metals Recycling Ltd. provide for the collection, recycling and recovery of WEEE and waste batteries on behalf of WEEE Ireland.

If you require any further information about our services or require receptacles, please feel free to contact us:

T: 057 9341634 E: [info@kmk.ie](mailto:info@kmk.ie) W: [www.kmk.ie](http://www.kmk.ie)

